



## OTX T1/E1 Analyzer Installation Guide

**Doc. No. 1512-1-SAA-1011-1**

**Rev. 1.2**

**Copyright**

© Copyright 2005-2009, Odin TeleSystems, Inc. All rights reserved. No part of this publication may be reproduced, stored in a retrieval system, or transmitted in any form or by any means, electronic, mechanical, photocopying, recording or otherwise, without the prior written consent of Odin TeleSystems Inc., 800 East Campbell Road, Suite 334, Richardson, Texas 75081, U. S. A.

**Trademarks**

Odin TeleSystems, the Odin Logo, OTX, and OTX T1/E1 Analyzer are trademarks of Odin TeleSystems Inc., which may be registered in some jurisdictions. Other trademarks are the property of their respective companies.

**Changes**

The material in this document is for information only and is subject to change without notice. While reasonable efforts have been made in the preparation of this document to assure its accuracy, Odin TeleSystems Inc., assumes no liability resulting from errors or omissions in this document, or from the use of the information contained herein.

Odin TeleSystems Inc. reserves the right to make changes in the product design without reservation and notification to its users.

**Warranties**

THE PRODUCT AND ITS DOCUMENTATION ARE PROVIDED "AS IS" AND WITHOUT WARRANTY OF ANY KIND. ODIN TELESYSTEMS EXPRESSLY DISCLAIMS ALL THE WARRANTIES, EXPRESS OR IMPLIED, INCLUDING, BUT NOT LIMITED TO THE IMPLIED WARRANTIES OF MERCHANTABILITY AND FITNESS FOR PARTICULAR PURPOSE. ODIN TELESYSTEMS DOES NOT WARRANT THAT THE FUNCTIONALITY OF THE PRODUCT WILL MEET ANY REQUIREMENTS, OR THAT THE OPERATIONS OF THE PRODUCT WILL BE UNINTERRUPTED OR ERROR-FREE, OR THAT DEFECTS WILL BE CORRECTED. FURTHERMORE, ODIN TELESYSTEMS DOES NOT WARRANT OR MAKE ANY REPRESENTATIONS REGARDING THE USE OF THE PRODUCT OR ITS DOCUMENTATION IN TERMS OF THEIR CORRECTNESS, ACCURACY, RELIABILITY, OR OTHERWISE. NO ORAL OR WRITTEN INFORMATION OR ADVISE GIVEN BY ODIN TELESYSTEMS OR ODIN TELESYSTEMS' AUTHORIZED REPRESENTATIVE SHALL CREATE A WARRANTY. SOME JURISDICTIONS DO NOT ALLOW THE EXCLUSION OF IMPLIED WARRANTIES, SO THE ABOVE EXCLUSION MAY NOT APPLY.

UNDER NO CIRCUMSTANCE SHALL ODIN TELESYSTEMS INC., ITS OFFICERS, EMPLOYEES, OR AGENTS BE LIABLE FOR ANY INCIDENTAL, SPECIAL, OR CONSEQUENTIAL DAMAGES (INCLUDING DAMAGES FOR LOSS OF BUSINESS, PROFITS, BUSINESS INTERRUPTION, LOSS OF BUSINESS INFORMATION) ARISING OUT OF THE USE OR INABILITY TO USE THE PRODUCT AND ITS DOCUMENTATION, EVEN IF ODIN TELESYSTEMS HAS BEEN ADVISED OF THE POSSIBILITY OF SUCH DAMAGES. IN NO EVENT WILL ODIN TELESYSTEMS' LIABILITY FOR ANY REASON EXCEED THE ACTUAL PRICE PAID FOR THE PRODUCT AND ITS DOCUMENTATION. SOME JURISDICTIONS DO NOT ALLOW THE LIMITATION OR EXCLUSION OF LIABILITY FOR INCIDENTAL AND CONSEQUENTIAL DAMAGES, SO THE ABOVE LIMITATION OR EXCLUSION MAY NOT APPLY.



## Table of Contents

<b>1</b>	<b>Abstract.....</b>	<b>5</b>
<b>2</b>	<b>Installing the OTX T1/E1 Analyzer .....</b>	<b>5</b>
<b>3</b>	<b>Starting the OTX T1/E1 Analyzer.....</b>	<b>8</b>
<b>4</b>	<b>Uninstalling the OTX T1/E1 Analyzer.....</b>	<b>8</b>
<b>5</b>	<b>Contact Information .....</b>	<b>9</b>
<b>6</b>	<b>Reference documents .....</b>	<b>10</b>
<b>7</b>	<b>Glossary .....</b>	<b>10</b>



---

## List of Figures

Figure 1 Select Destination Location.....	5
Figure 2 Select Start Menu Folder .....	6
Figure 3 Select Additional Tasks .....	6
Figure 4 Ready to Install.....	7
Figure 5 Installation Progress Bar.....	7
Figure 6 Installation Complete.....	8
Figure 7 Uninstall T1E1Analyzer .....	8



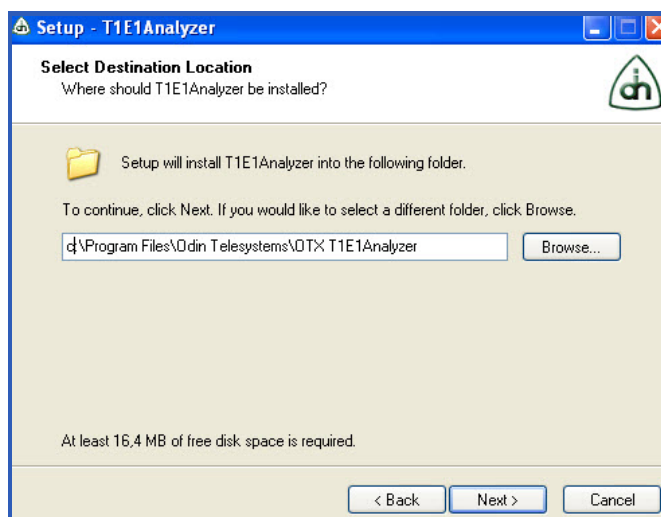
## 1 Abstract

This document describes how to install the OTX T1/E1 Analyzer Software from Odin TeleSystems.

## 2 Installing the OTX T1/E1 Analyzer

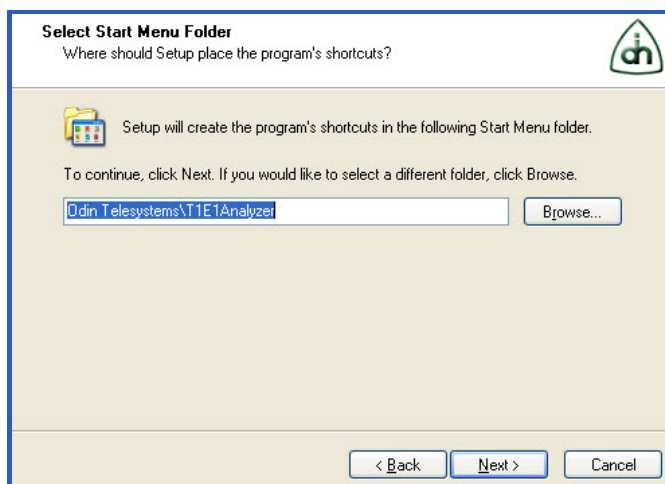
To install the OTX T1/E1 Analyzer please run the “OTX T1/E1 Analyzer <version>.exe” file. The Setup Wizard will appear.

In the next dialog, please select the directory where you want to install the OTX T1/E1 Analyzer software by clicking “Browse...” button. The default directory is “C:\Program Files\Odin TeleSystems\OTX T1/E1 Analyzer”. Then click “Next” button. Please look at the Figure 1 below:

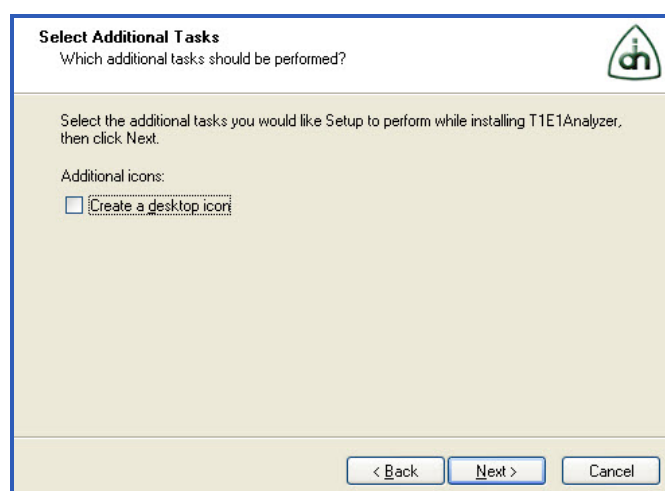


**Figure 1 Select Destination Location**

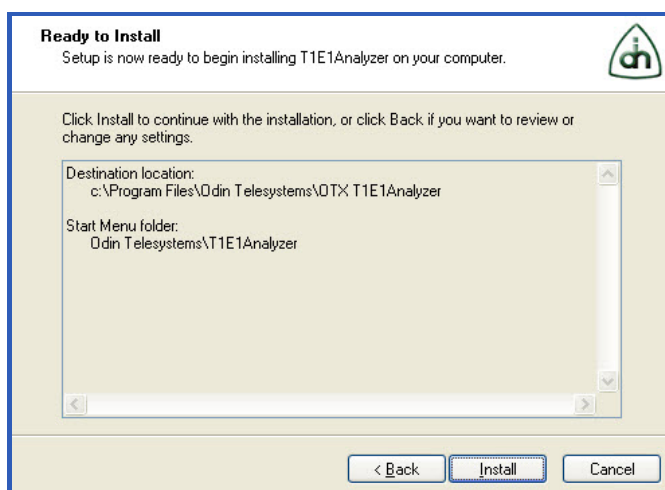
In this dialog, please select the directory where you want to place the OTX T1/E1 Analyzer software shortcut by clicking “Browse...” button. The default directory is “Odin TeleSystems\T1E1 Analyzer”. Then click “Next” button. Please look at the Figure 2 below:

**Figure 2 Select Start Menu Folder**

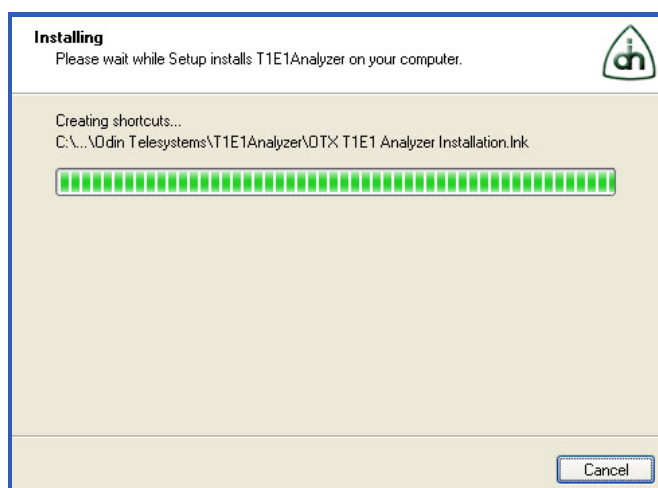
Please select the additional tasks you would like Setup to perform while installing E1/T1 Analyzer. In this version of software you can select “Create a desktop icon” option. Then click “Next” button. Please look at the Figure 3 below:

**Figure 3 Select Additional Tasks**

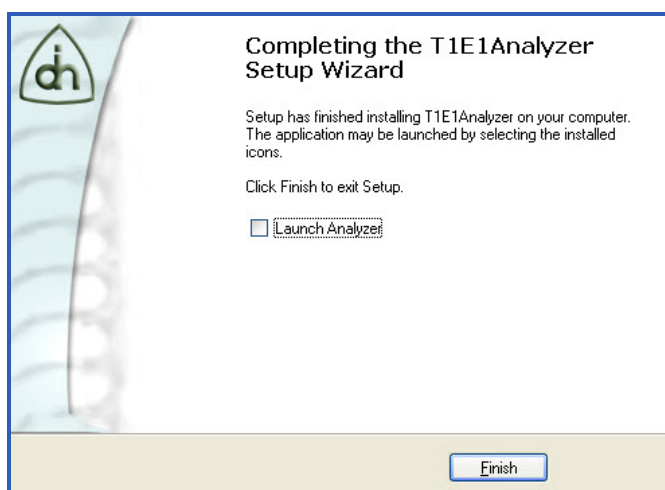
The “Ready to Install” dialog will appear. To start the installation, click “Install” button. Please look at the Figure 4 below:

**Figure 4 Ready to Install**

You will see an increasing progress bar during the installation until the entire software package will be installed. Please look at the Figure 5 below:

**Figure 5 Installation Progress Bar**

Once the installation completes, you will see the following dialog, illustrated at the Figure 6. Select the “Launch Analyzer” option if you want to launch E1/T1 Analyzer immediately. Then click “Finish” button to exit Setup.



**Figure 6 Installation Complete**

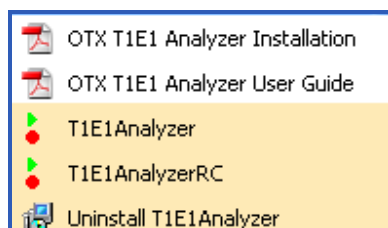
The installation is complete. You are ready to run the software.

### 3 Starting the OTX T1/E1 Analyzer

Run the OTX T1/E1 Analyzer from the “Start/All Programs/Odin Telesystems” program folder, or from the Start Menu Folder you chose during the installation, or from the Desktop Icon you created.

### 4 Uninstalling the OTX T1/E1 Analyzer

To uninstall the OTX T1/E1 Analyzer please run the “Uninstall T1E1 Analyzer” file from the “Start/All Programs/Odin Telesystems” program folder.



**Figure 7 Uninstall T1E1Analyzer**

The OTX T1/E1 Analyzer will be deleted from your pc.





---

## 5 Contact Information

For more information or for technical support, please contact:

Odin TeleSystems Inc.

800 E. Campbell Road, Suite 334

Richardson, Texas 75081-1873

U. S. A.

Tel: +1-972-664-0100

Fax: +1-972-664-0855

Email: [Info@OdinTS.com](mailto:Info@OdinTS.com)

URL: <http://www.OdinTS.com>



## 6 Reference documents

The following documents provide further detailed information related to the OTX T1/E1 Analyzer software package:

- Users Guide for OTX T1/E1 Analyzer (Odin document number 1412-1-SAA-1011-1)

## 7 Glossary

OTX – Odin Telecom Framework

OS – Operating System

GUI – Graphical User Interface.